

(%)

### EXPERIMENTAL

Air samples were collected every 24hrs using high volume air sampler located on the roof of our laboratory. Quartz microfibre filter (QMF) QM-A for high volume air sampling were obtained from Whatman and cleaned before use by ashing for 24 hrs. The polyurethane foam plugs (PUF) washed with hot water followed by acetone with Soxhlet extractor for 12 hrs. Internal standard were full labeled PCDDs and half labeled PCDFs with  $^{13}\text{C}$  obtained from Cambridge Isotope Laboratories

The JEOL DX-303 mass spectrometer equipped with post acceleration type high sensitive ion detector and a Hewlett-Packard 5890A GC were used. Data acquisition and analysis carry out by the DA-5100 computer system. Two or three ions from each congener groups were monitored. The GC/MS condition are same as previous study<sup>11</sup>

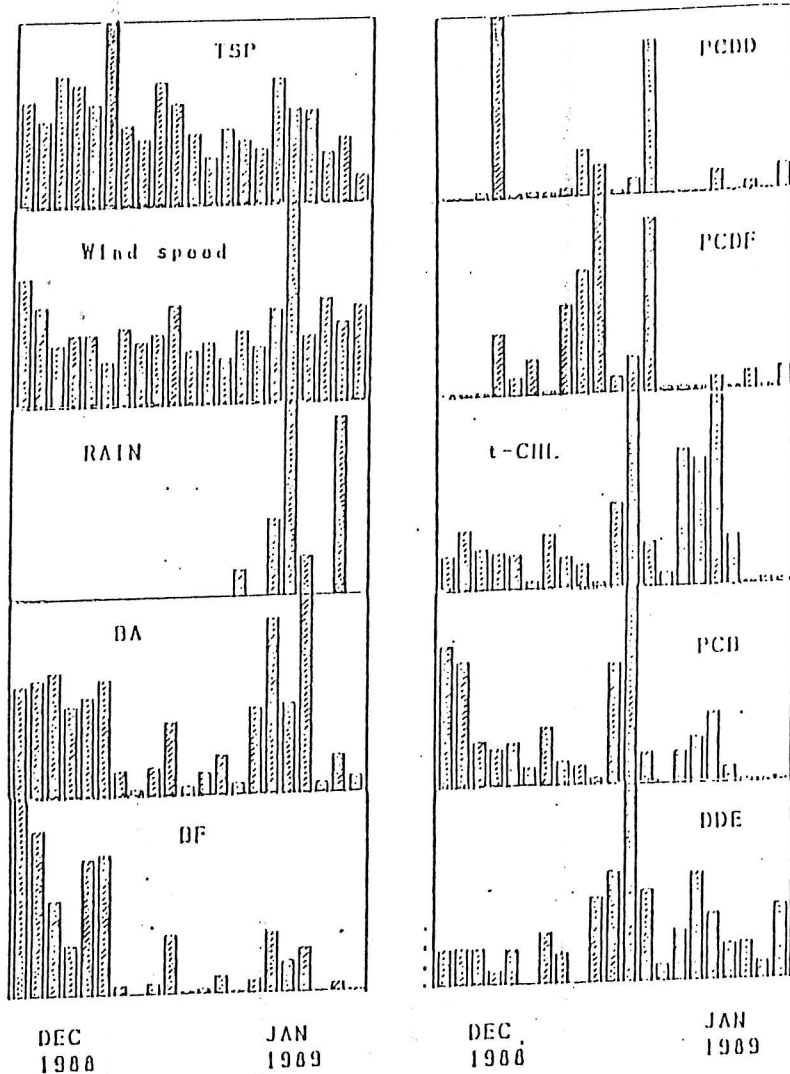


Fig.1 Daily variation (Dec.1988 - Jan.1989)  
Abbreviations are defined in the Table 3

(%)

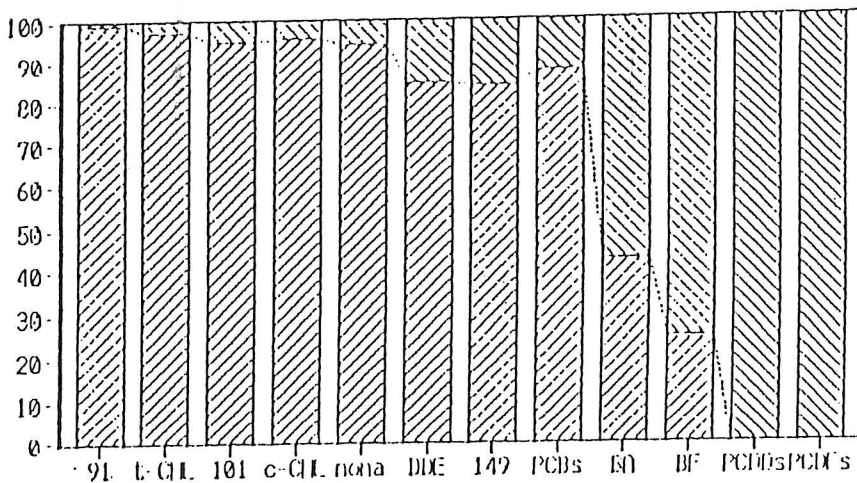


Fig.2 Vapor-to-particle ratios (Dec.1988 - Jan.1989)  
Abbreviations are defined in the Table 3