

Figure 4  
GC-MS-SIM chromatograms  
of PCDD.

(A) Gas treatment carbon  
(B) Water treatment carbon  
(C) Fly ash extract

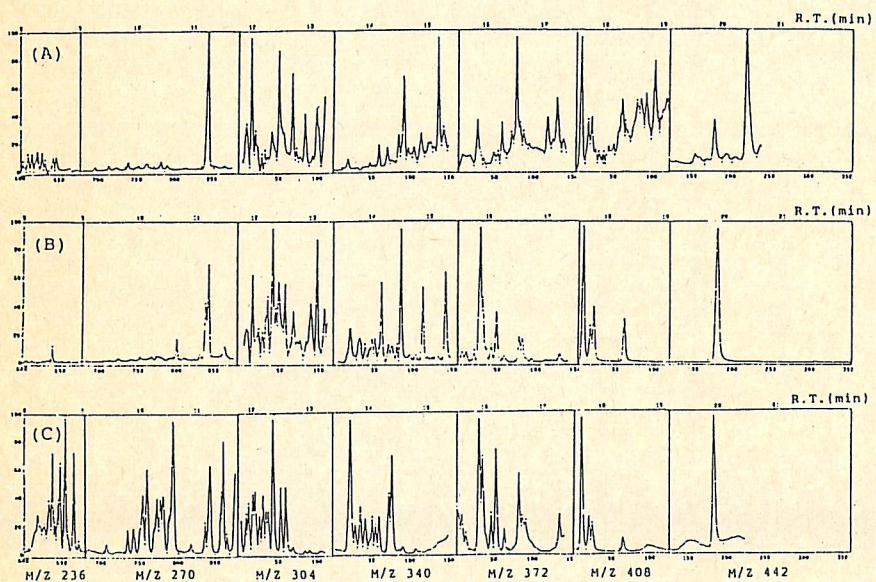


Figure 5  
GC-MS-SIM chromatograms  
of PCDF.

(A) Gas treatment carbon  
(B) Water treatment carbon  
(C) Fly ash extract

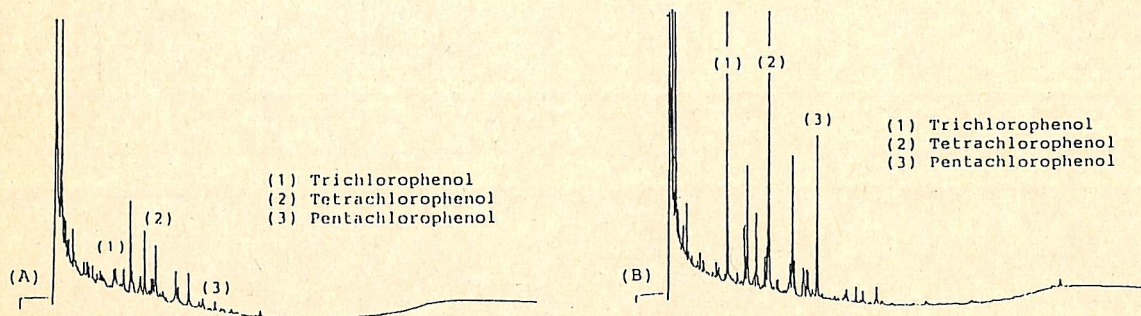


Figure 6 GC-ECD chromatograms of acidic fractions.

(A) Gas treatment carbon  
(B) Water treatment carbon