

Fig. 4 Congener distribution of PCDDs and PCDFs.

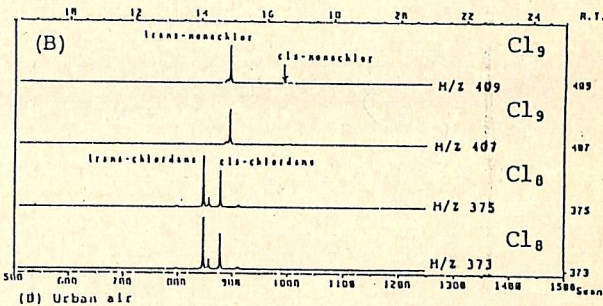
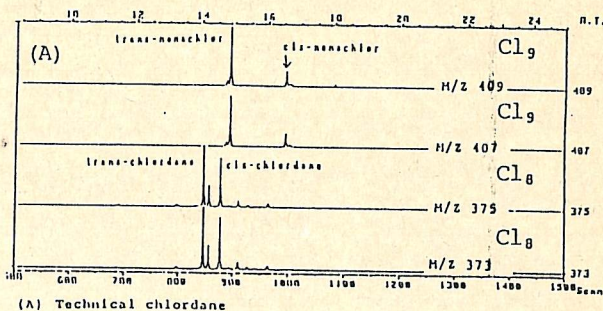


Fig. 6 GC-MS-SIM chromatograms of PCB fraction
A: Technical chlordane B: Urban air

Table 1 Levels of chlorinated compounds in urban air

Compound	Range	(ng/m ³)
		Average
PCBs	0.9 - 11.7	2.8
trans-chlordane	0.06 - 0.30	0.16
cis-chlordane	0.04 - 0.22	0.12
trans-nonachlor	0.03 - 0.17	0.09
cis-nonachlor	0.001 - 0.035	0.014
chlordanes*	0.12 - 0.50	0.34
α-HCH	0.01 - 0.29	0.14
β-HCH	0.01 - 0.52	0.16
HCB	0.01 - 0.15	0.04
p,p'-DDE	0.003 - 0.010	0.006
PCDDs	0.0014 - 0.037	0.0086
PCDFs	0.0022 - 0.022	0.0088

chlordanes* : chlordane + nonachlor

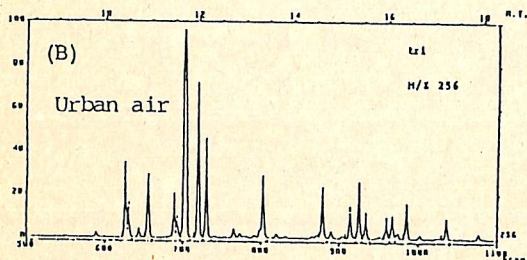
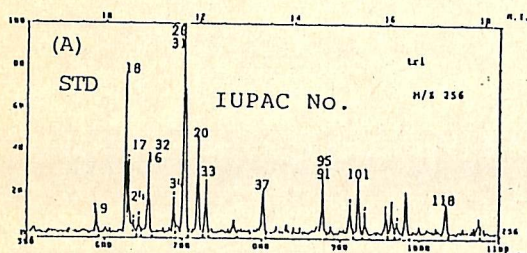


Fig. 5 GC-MS-SIM chromatogram of PCB (Cl₁₃)

A: Equivalent mixture of Kanechlor (KC 300, KC 400, KC 500, KC 600)
B: Urban air

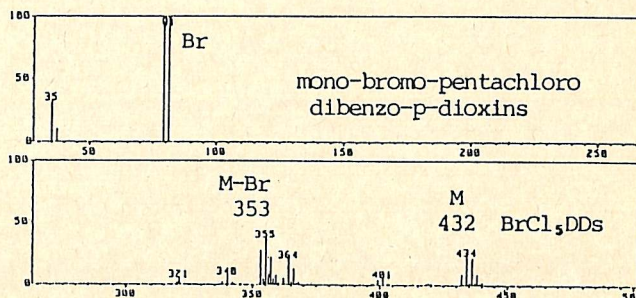


Fig. 7 NCI mass spectrum of brominated compound.
(mono-bromo-pentachloro DDs M:432)